



Konische Kappen und Stopfen

Konische Kappen und Stopfen bieten eine komplette, flexible und vielseitige Lösung. Sie können als Kappe oder als Schutzstopfen für Bohrungen verwendet werden. Die konische Form erlaubt eine flexible Verwendung für diverse Einsatzbereiche und Größen.

tapered caps & plugs

Tapered caps and plugs provide a completely flexible and versatile solution. They can be placed on a component as a cap, or inserted into a port as a protective plug. The tapered design also allows one port to accommodate different applications and tolerances.

Die T-Serie war die erste Serie, die im Jahr 1948 produziert wurde.

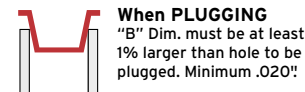
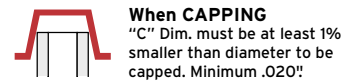
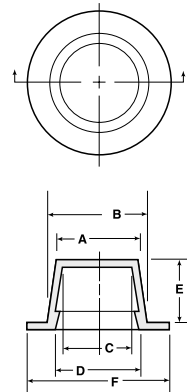
W Series Tapered Caps & Plugs with Wide Flanges



W Series tapered caps and plugs with wide flanges offer added protection and prevent accidental force into or through an opening when used as a plug.

- Covers a vast range of cap or plug applications
- Easy to install and remove
- Added protection for bearing surfaces

Material: Low-Density Polyethylene **Color:** Red



Tapered Caps & Plugs with Wide Flanges W Series

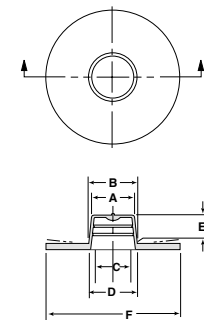
Caplugs No.	Dimensions												Packaging	
	A		B		C		D		E		F		Carton Quantity	Mini Pak Quantity
	In	mm	In	mm	In	mm	In	mm	In	mm	In	mm		
W-0	.173	4.39	.240	6.10	.111	2.82	.177	4.50	.38	9.65	.56	14.22	5000	1000
W-1	.240	6.10	.315	8.00	.183	4.65	.245	6.22	.36	9.14	.62	15.75	5000	1000
W-2	.302	7.67	.375	9.53	.240	6.10	.303	7.70	.38	9.65	.69	17.53	5000	1000
W-3	.360	9.14	.425	10.80	.298	7.57	.363	9.22	.38	9.65	.75	19.05	5000	1000
W-4	.425	10.80	.480	12.19	.363	9.22	.418	10.62	.38	9.65	.81	20.57	5000	1000
W-5	.472	11.99	.540	13.72	.410	10.41	.478	12.14	.44	11.18	.88	22.35	5000	1000
W-6	.536	13.61	.615	15.62	.474	12.04	.553	14.05	.44	11.18	.94	23.88	5000	1000
W-7	.590	14.99	.670	17.02	.528	13.41	.608	15.44	.50	12.70	1.00	25.40	5000	1000
W-8	.643	16.33	.726	18.44	.581	14.76	.662	16.82	.50	12.70	1.03	26.16	5000	1000
W-9	.683	17.35	.785	19.94	.621	15.77	.723	18.36	.53	13.46	1.13	28.70	5000	1000
W-10	.765	19.43	.865	21.97	.703	17.86	.803	20.40	.56	14.22	1.19	30.23	5000	1000
W-11	.820	20.83	.930	23.62	.758	19.25	.868	22.05	.59	14.99	1.25	31.75	5000	1000
W-12	.872	22.15	.977	24.82	.810	20.57	.916	23.27	.59	14.99	1.31	33.28	2500	500
W-13	.975	24.77	1.104	28.04	.913	23.19	1.042	26.47	.72	18.29	1.44	36.58	2500	500
W-14	1.158	29.41	1.275	32.39	1.096	27.84	1.213	30.81	.72	18.29	1.56	39.63	2500	500
W-14X	1.175	29.85	1.284	32.61	1.120	28.45	1.229	31.22	.63	16.00	1.67	42.42	2500	500
W-15	1.243	31.57	1.375	34.93	1.181	30.00	1.313	33.35	.72	18.29	1.69	42.93	2500	500
W-16	1.312	33.33	1.475	37.47	1.250	31.75	1.413	35.89	.88	22.35	1.81	45.98	1000	200
W-16X	1.517	38.53	1.600	40.64	1.432	36.37	1.514	38.46	.49	12.34	2.26	57.30	2000	400
W-17	1.455	36.96	1.615	41.02	1.393	35.38	1.553	39.45	.72	18.29	1.94	49.28	1000	200
W-18	1.575	40.01	1.685	42.80	1.513	38.43	1.623	41.23	.69	17.53	2.00	50.80	1000	200
W-19	1.735	44.07	1.900	48.26	1.673	42.50	1.838	46.69	.72	18.29	2.22	56.39	1000	200
W-20	1.810	45.98	1.950	49.53	1.748	44.40	1.888	47.96	.69	17.53	2.31	58.68	1000	200
W-21	1.945	49.40	2.100	53.34	1.883	47.83	2.038	51.77	.69	17.53	2.44	61.98	1000	200

WWX Series Tapered Caps & Plugs with Extra-Wide, Extra-Thick Flanges



WWX Series tapered caps and plugs with extra-wide, extra-thick flanges provide extended visibility. The fail-proof design prevents the mating component from being installed without first removing the cap. The series can be easily installed and removed.

Material: Low-Density Polyethylene **Color:** Yellow



Tapered Caps & Plugs with Extra-Wide, Extra-Thick Flanges WWX Series

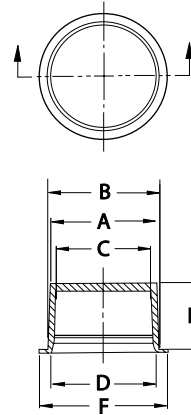
Caplugs No.	Dimensions												Packaging	
	A		B		C		D		E		F		Carton Quantity	Mini Pak Quantity
	In	mm	In	mm	In	mm	In	mm	In	mm	In	mm		
WWX-8	.628	15.95	.725	18.42	.566	14.38	.643	16.33	.44	11.18	2.23	56.64	1000	200
WWX-10	.755	19.18	.870	22.10	.686	17.42	.788	20.02	.50	12.70	2.37	60.20	1000	200
WWX-12	.867	22.02	.975	24.77	.798	20.27	.889	22.58	.56	14.22	2.48	62.99	1000	200
WWX-13	.984	24.99	1.105	28.07	.909	23.09	1.014	25.76	.66	16.76	2.61	66.29	1000	200
WWX-14	1.110	28.20	1.253	31.83	1.046	26.57	1.171	29.74	.66	16.76	2.73	69.34	500	100
WWX-15	1.237	31.42	1.382	35.10	1.171	29.74	1.291	32.79	.66	16.76	2.88	73.15	800	160
WWX-16	1.312	33.32	1.465	37.21	1.243	31.57	1.375	34.93	.66	16.76	2.97	75.44	800	160
WWX-17	1.452	36.88	1.603	40.72	1.387	35.23	1.519	38.58	.66	16.76	3.10	78.74	700	140
WWX-18	1.580	40.13	1.714	43.54	1.513	38.43	1.624	41.25	.66	16.76	3.21	81.53	700	140
WWX-21	1.927	48.95	2.058	52.27	1.867	47.42	1.973	50.11	.66	16.76	3.56	90.42	600	120
WWX-230	2.120	53.85	2.290	58.17	2.036	51.71	2.210	56.13	1.00	25.40	3.79	96.27	300	60
WWX-250	2.395	60.83	2.602	66.09	2.322	58.98	2.530	64.26	1.13	28.70	4.10	104.14	200	40
WWX-44	2.638	67.01	2.759	70.08	2.547	64.69	2.670	67.82	1.13	28.70	4.26	108.20	200	40
WWX-500	2.850	72.39	2.980	75.69	2.787	70.79	2.920	74.17	.75	19.05	4.25	107.95	500	100
WWX-55A	2.990	75.95	3.217	81.71	2.920	74.16	3.130	79.50	1.00	25.40	4.12	104.65	300	60
WWX-501	3.320	84.33	3.458	87.83	3.244	82.40	3.400	86.36	.88	22.35	4.88	123.95	250	50
WWX-1063	3.930	99.82	4.070	103.38	3.860	98.04	4.000	101.60	0.75	19.05	5.38	136.65	400	80

TV Series Flexible Vinyl Tapered Caps & Plugs



TV Series flexible vinyl tapered caps and plugs resist tearing, cracking, splitting and shredding through a unique A-80 Shore durometer vinyl. They also provide a snug fit even with smaller dimensions and irregular shapes for easy installation and removal.

Material: Vinyl (80 Durometer) **Color:** Red



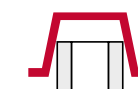
† Part has a side pull-tab on flange

Flexible Vinyl Tapered Caps & Plugs TV Series

Caplugs No.	Dimensions												Packaging	
	A		B		C		D		E		F		Carton Quantity	Mini Pak Quantity
	In	mm	In	mm	In	mm	In	mm	In	mm	In	mm		
TV-1	.234	5.94	.270	6.86	.180	4.57	.198	5.03	.319	8.10	.39	9.91	10000	1000
TV-2	.300	7.62	.363	9.22	.218	5.54	.295	7.49	.345	8.76	.50	12.70	7000	1000
TV-5	.433	11.00	.498	12.65	.365	9.27	.441	11.20	.405	10.29	.67	17.02	7500	1000
TV-6	.496	12.60	.556	14.12	.434	11.02	.494	12.55	.425	10.80	.72	18.29	6000	1000
TV-6A	.570	14.48	.619	15.72	.497	12.62	.546	13.87	.467	11.86	.81	20.57	1700	340
TV-7	.577	14.66	.636	16.15	.506	12.85	.570	14.48	.495	12.57	.79	20.07	6000	1000
TV-248	.628	15.95	.775	19.69	.570	14.48	.697	17.70	.710	18.03	.90	22.86	3750	750
TV-8 †	.686	17.42	.754	19.15	.624	15.85	.680	17.27	.588	14.94	.96	24.38	4500	900
TV-8P	.670	17.02	.735	18.67	.592	15.04	.671	17.04	.464	11.79	.98	24.89	6000	1000
TV-8J	.737	18.72	.771	19.58	.653	16.59	.711	18.06	.485	12.32	.99	25.15	6000	1000
TV-9 †	.760	19.30	.818	20.78	.620	15.75	.678	17.22	.630	16.00	.96	24.38	3500	700
TV-10 †	.813	20.65	.884	22.45	.745	18.92	.837	21.26	.498	12.65	1.20	30.48	3500	700
TV-11	.842	21.39	.895	22.73	.772	19.61	.850	21.59	.608	15.44	1.07	27.18	6000	1000
TV-11A	.935	23.75	.980	24.89	.775	19.69	.820	20.83	.570	14.48	1.24	31.50	4000	800
TV-11P	.847	21.51	.931	23.65	.764	19.41	.851	21.62	.641	16.28	1.08	27.43	4000	800
TV-12	.993	25.22	1.106	28.09	.925	23.50	1.044	26.52	.745	18.92	1.37	34.80	2500	500
TV-12P	.880	22.35	.950	24.13	.720	18.29	.790	20.07	.650	16.51	1.16	29.46	4000	800
TV-13 †	1.031	26.19	1.164	29.57	.950	24.13	1.090	27.69	.760	19.30	1.30	33.02	2250	450
TV-14	1.121	28.47	1.183	30.05	1.040	26.42	1.128	28.65	.745	18.92	1.46	37.08	2000	400
TV-14A †	1.182	30.02	1.303	33.10	1.042	26.47	1.163	29.54	.760	19.30	1.51	38.35	2500	500
TV-15	1.346	34.19	1.425	36.20	1.196	30.38	1.275	32.39	.880	22.35	1.63	41.40	1200	240
TV-16	1.301	33.05	1.367	34.72	1.221	31.01	1.291	32.79	.710	18.03	1.58	40.13	1500	300
TV-16A	1.324	33.63	1.460	37.08	1.184	30.07	1.320	33.53	.940	23.88	1.68	42.67	1500	300
TV-19	1.512	38.40	1.586	40.28	1.362	34.59	1.436	36.47	.750	19.05	1.87	47.50	1500	300
TV-19A	1.773	45.03	1.871	47.52	1.667	42.34	1.774	45.06	.625	15.88	2.10	53.34	1200	240
TV-20	1.625	41.28	1.703	43.26	1.514	38.46	1.615	41.02	.700	17.78	1.85	46.99	1500	300
TV-21H	1.906	48.41	2.054	52.17	1.790	45.47	1.923	48.84	1.050	26.67	2.47	62.74	850	170



When PLUGGING
"B" Dim. must be at least 1% larger than hole to be plugged. Minimum .020!"



When CAPPING
"C" Dim. must be at least 1% smaller than diameter to be capped. Minimum .020!"